

Installing AccessMaths 4

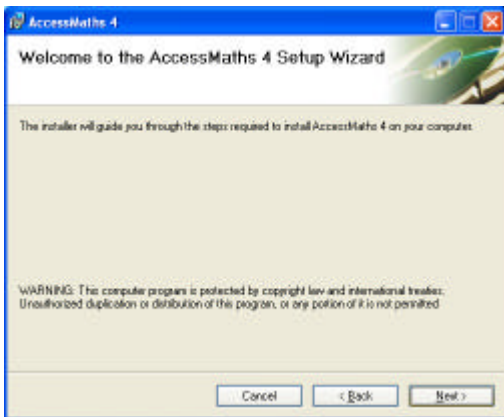
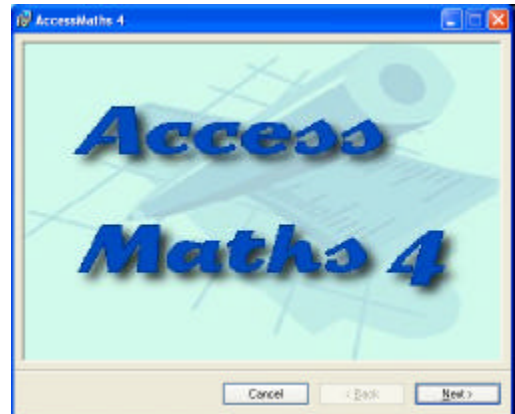
Important Note: In order to install or register AccessMaths you need to be logged in to the computer with administrative privileges (normally as 'administrator').

The program, when installed will run as a full version of the program for **30 days**. You will be reminded of this each time you start the program. At any time you can register the program by purchasing a license from the ACE Centre. It will then run indefinitely as the full program.

To install AccessMaths from the CD.

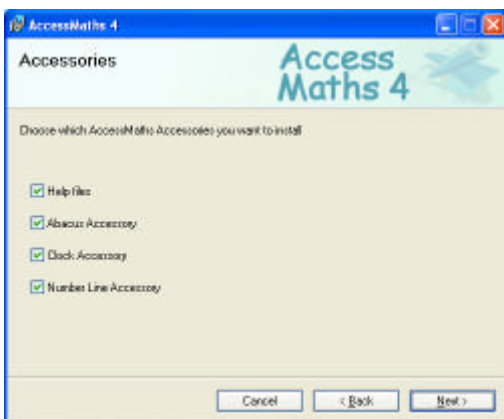
Insert the CD into you CD drive. The installer should automatically run after a short time. If it does not open 'My Computer', right click on the CD dirve (this should show the AccessMaths Logo) and select 'Explore'. Open or double click on SETUP.EXE.

The opening picture should appear on the screen, click 'Next' and you will then be welcomed to the installation process.



At any point up to the final confirmation you can cancel the installation or go back to a previous screen of choices.

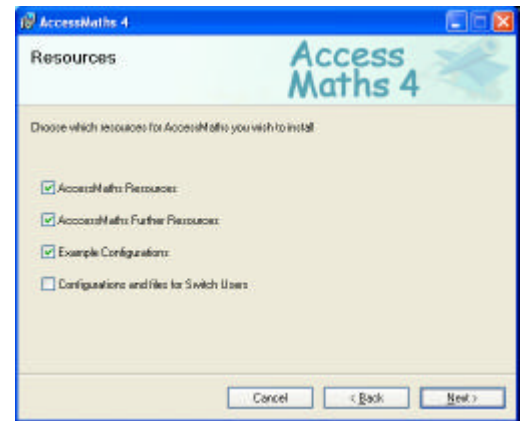
Press 'Next' again and you will then be asked to read and confirm the license agreement. The 'Next' button will not be enabled until you agree.



AccessMaths comes with a number of extra facilities. You may choose to install these (or not). This screen gives you the option of adding the Abacus, Interactive Clock and Number Line accessories. You may also choose not to install the Help files. The special 'Designer Calculator' freely available from the ACE Centre has been included as a bonus.

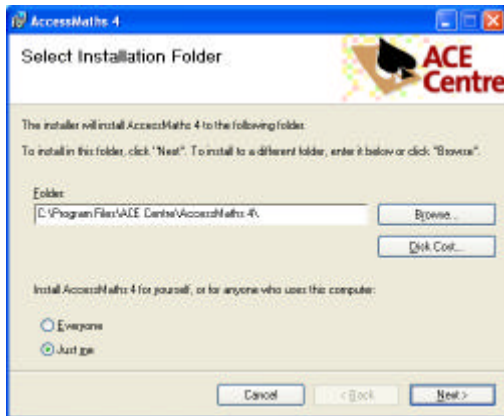
Some extra resources have been included with AccessMaths to provide some examples and ideas as to how the program may be used in the Maths and CDT curricula. These consist of example work pages (MTH files) and supporting Word documents. We have also added example program configuration files (CFG files) to show how AccessMaths can be tailored for different uses and users.

The Switch Configurations are intended for use with the SAW (Switch Access to Windows) program. Switch users can have full access to all the facilities and power of AccessMaths



You will now be asked to select the installation location. The default is

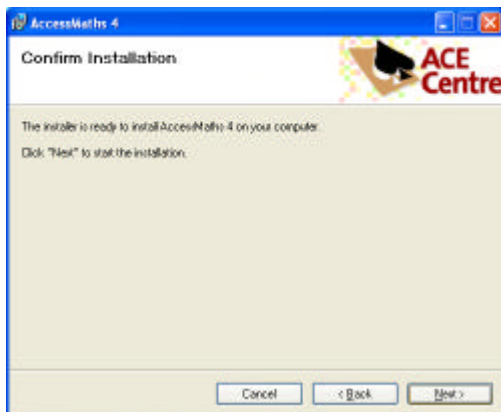
C:\Program Files\ACE Centre\AccessMaths



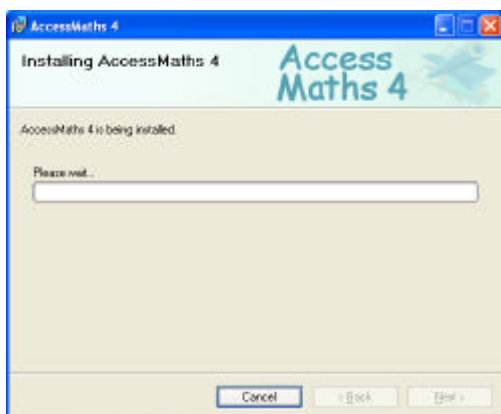
You may change this here. The 'Disk Cost' will show how your hard disk space will be used.



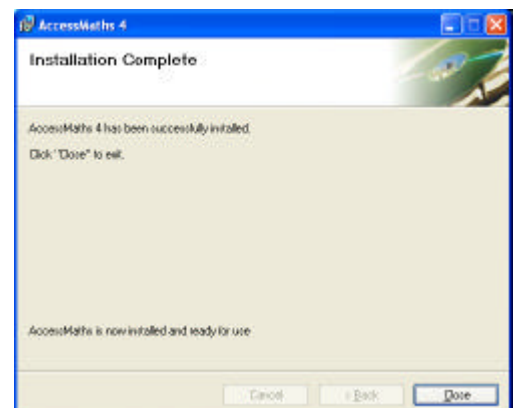
Note: Don't forget that if you are installing as an administrator for other users to select 'Everyone', this is not the default setting



You will now be asked to confirm the installation and if you are certain of your choices click 'Next'.



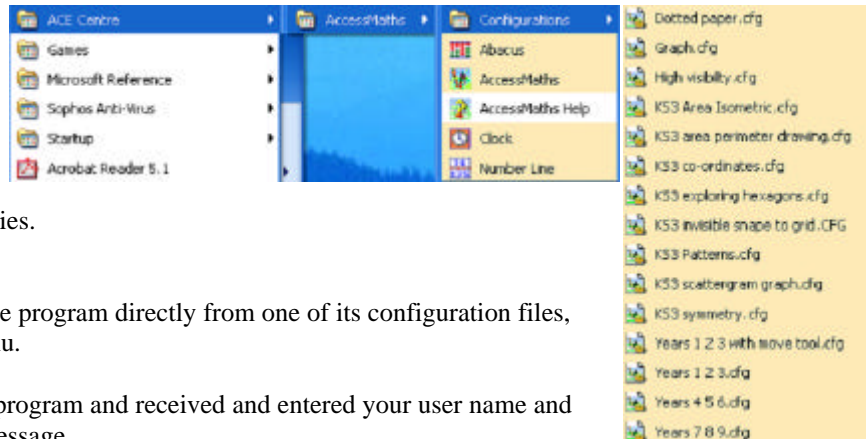
AccessMaths will now install, the progress being shown by the 'Please wait...' bar. On completion you will be given an 'Installation Complete' message, click 'Close' and you may now use AccessMaths.



Running and Registering your copy of AccessMaths

To run AccessMaths Choose the Icon in 'Start Menu – Programs – ACE Centre - AccessMaths

You can run AccessMaths, the Help file (on-line manual) or any of the accessories.



Alternatively, you may start the program directly from one of its configuration files, also included on the same menu.

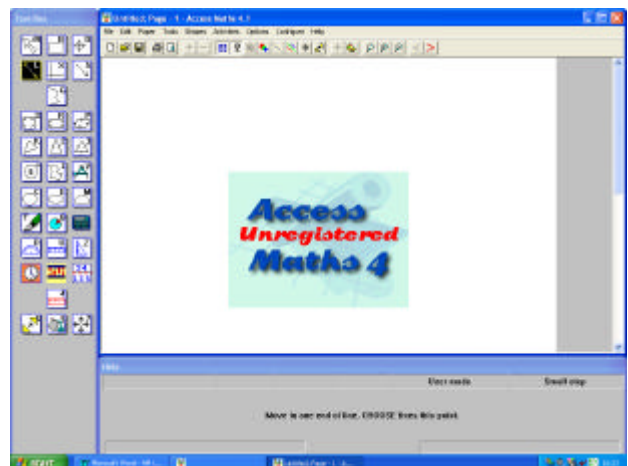
If you have not registered the program and received and entered your user name and key you will see a reminder message



You may now run AccessMaths by pressing the OK button which is enabled after a short delay. You may continue to run AccessMaths for 30 days after the first installation.

Note: Changing the computer clock or re-installing will not change this limitation.

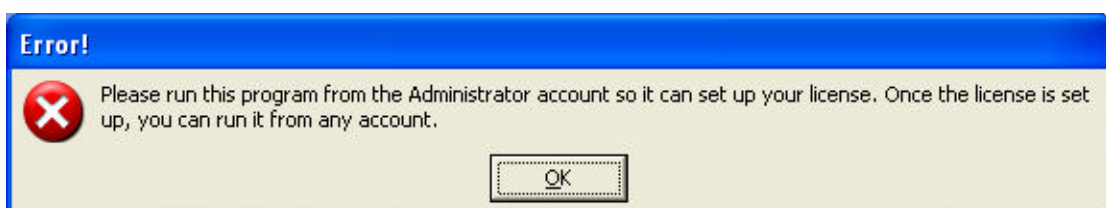
When you start the program before it has been registered a warning message will be displayed each time AccessMaths can be used. After the 30 day period is over you will only be able to enter your user name and key, AccessMaths will be inaccessible to you.



'Register Now!' will take you to a web page that will tell you how to obtain a user name and key to unlock the program.

Entering your key

Press 'Enter Key' If you do not have the correct privileges on the computer to install programs you will be given the message below. Log off and log on as a user with sufficient privileges. Consult your network manager if this is a problem



When you press the 'Enter Key' button you will be presented with the following dialogue box

'Register Now!' will take you to a web page that will tell you how to obtain a user name and key to unlock the program.

Enter the user name and key **exactly** as given to you with the program or by email. Click 'OK' and – if the name and key are valid – AccessMaths will now run without registration reminders and without a time limit.



Enter Key

Enter the registration name and key below, exactly as given to you.

Name:

Key:

OK Cancel Register Now!

The program should from now on start with a quick display of a start-up picture as below.



We hope you enjoy using AccessMaths and find it useful.

If you have any problems please contact:

info@ace-centre.or.uk or phone +44 (0)1865 759800

Copyright The ACECentre 2004,
92 Windmill Road, Oxford OX3 &DR
Fax +44 (0)1865 759810